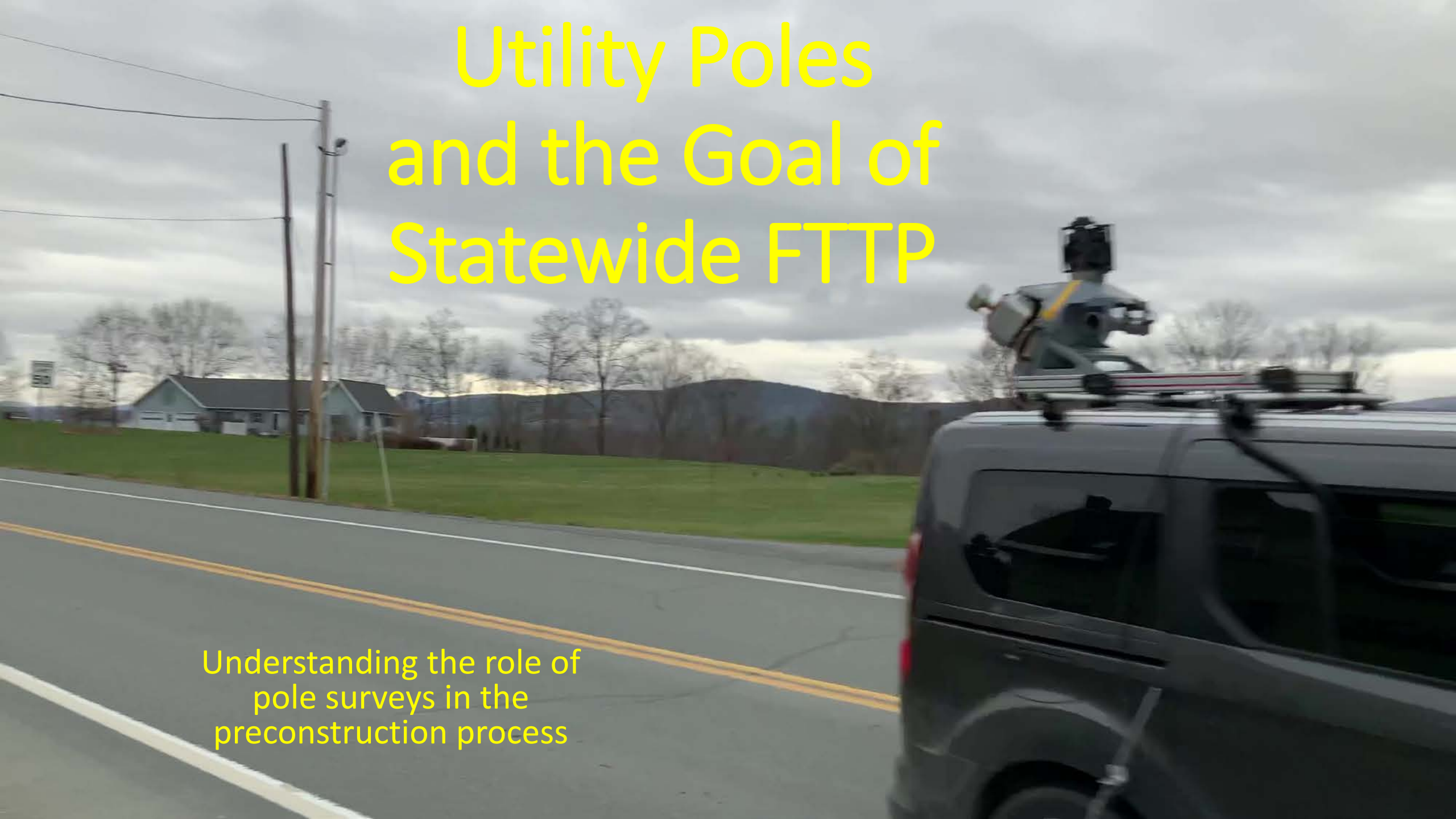


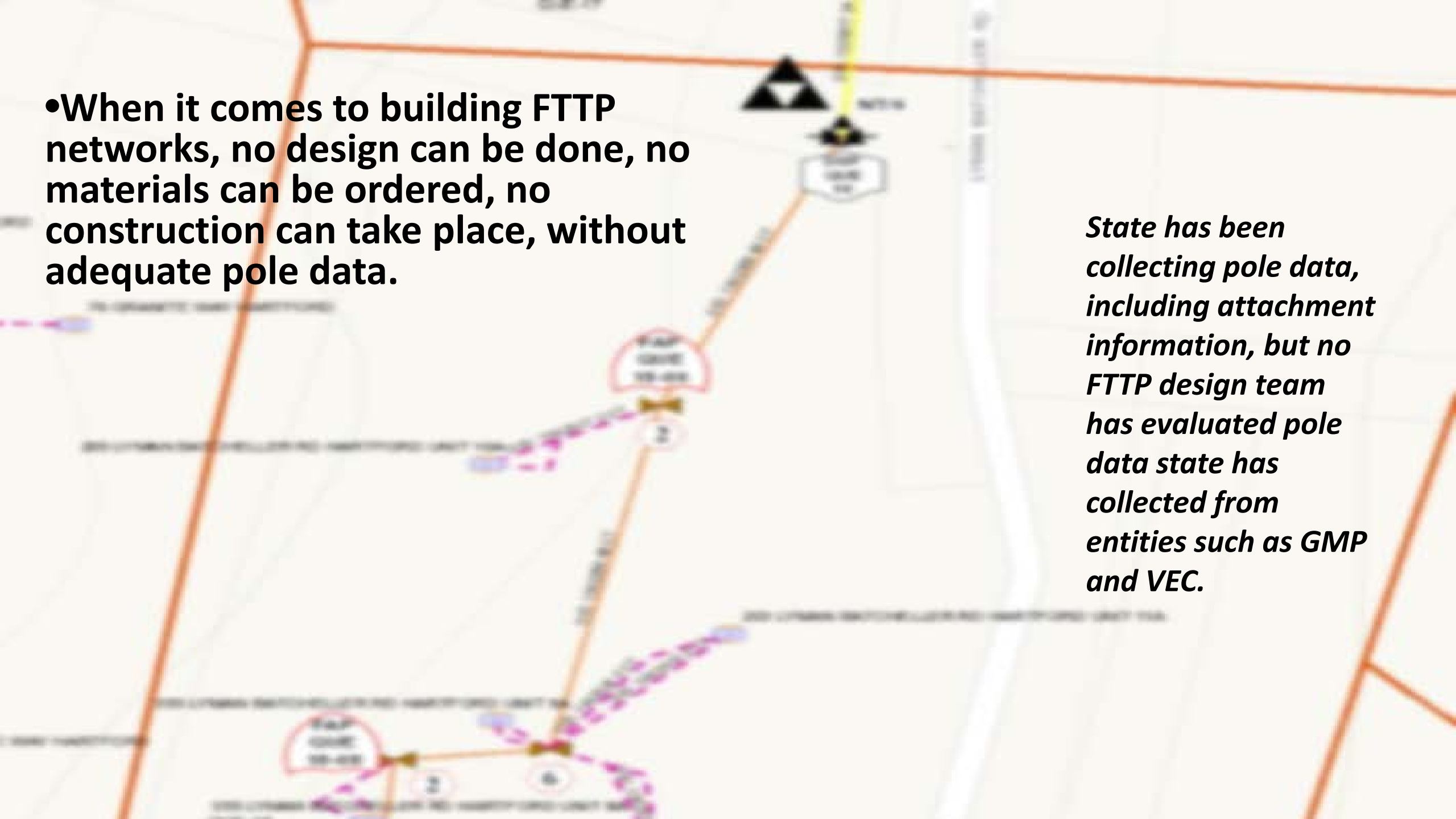
Utility Poles and the Goal of Statewide FTTP

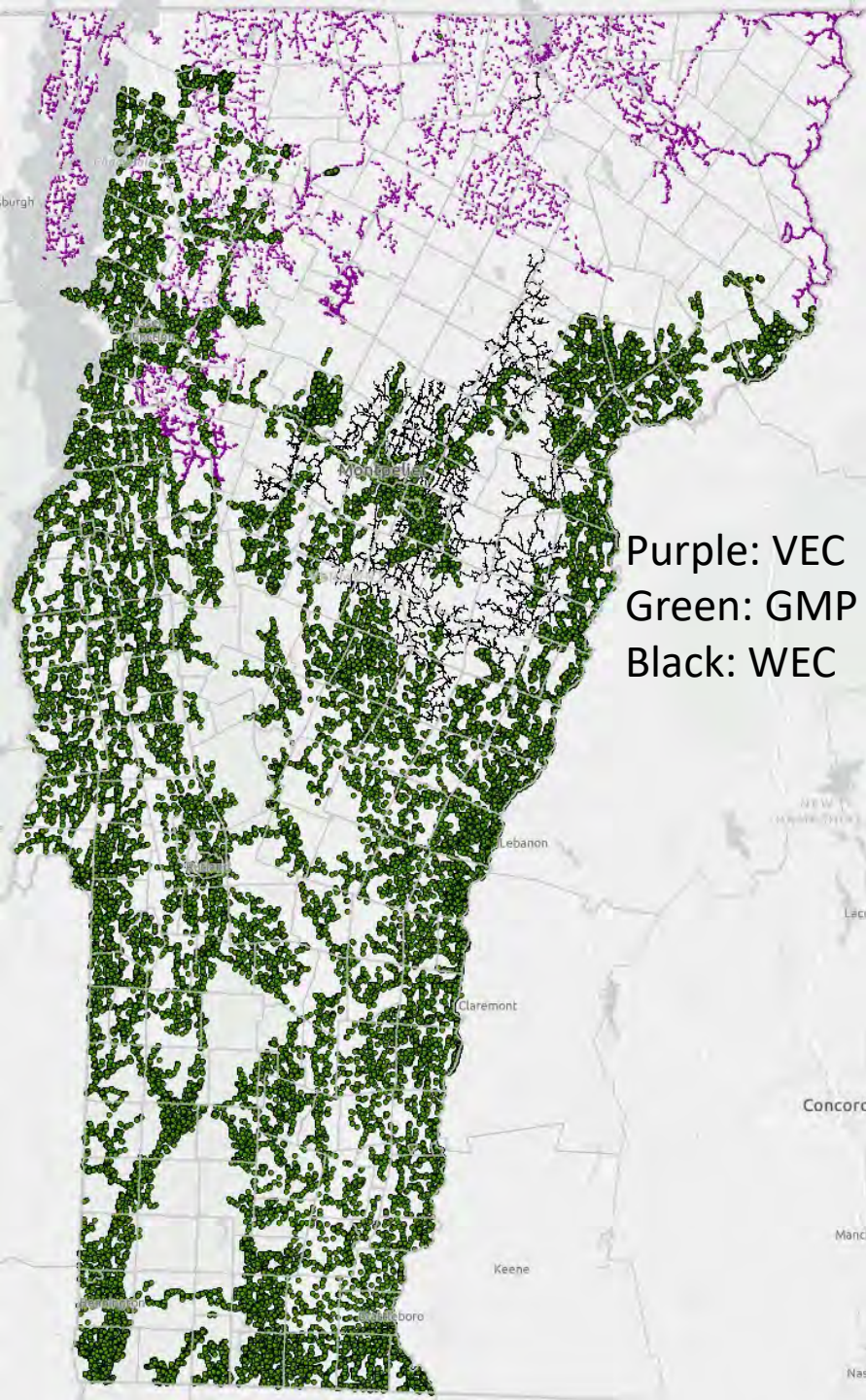
Understanding the role of
pole surveys in the
preconstruction process



•When it comes to building FTTP networks, no design can be done, no materials can be ordered, no construction can take place, without adequate pole data.

State has been collecting pole data, including attachment information, but no FTTP design team has evaluated pole data state has collected from entities such as GMP and VEC.





Vermont has more data available now than we had last summer.

But

Is it enough for FTTP design engineers to go to work?

VEC data appears to be 'good enough' for initial design and pole license applications.

GMP attachment data still not released by state.

A map of Vermont showing various towns and their fiber optic network. The network is represented by a dense web of green lines. The towns shown include Northfield, Williamstown, Brookfield, East Braintree, Randolph, Tunbridge, Chelsea, West Corinth, West Fairlee, Fairlee, and others. The map also shows county boundaries and names like Orange, Topsham, Newbury, Corinth, Vershire, and West Fairlee. The fiber network is most concentrated in the western and central parts of the state, particularly around the major population centers.

Close up of ECFiber new towns

ECFiber's design engineers want to collect the data

Preconstruction Costs for an FTTP Network

- Pole Data Collection Costs
- Design Fees
- Pole License & Makeready Costs
- ... that's if you don't own the poles or not on the poles already (example: ECFiber) ...

Takeaways:

- Think pre-construction instead of surveys. CRF grants have allowed some CUDs to move ahead to design work. Statewide effort not top priority of CUDs.
- *Anything* in the preconstruction bucket should be considered as facilitating the CRF objective of accelerating recovery and a good use of CRF monies.
- Preconstruction Grants and an expansion of VEDA loans could kick off major move toward buildout. More we can do in advance the faster that buildout happens.
- Other benefits include being closer to shovel-ready if federal money becomes available, and any work along these lines would count toward 'community contribution' VEDA looks for when evaluating projects.



- Prepared by: F. X. Flinn
- Chair, East Central Vermont Telecommunications District Governing Board
- President, Vermont Communications Union Districts Association (VCUDA)

Questions?